

## Crane Operator

Murray Constructions is a Civil Construction Company based in Deniliquin, NSW.

We specialise in bridge construction across NSW and Northern VIC.

We are currently seeking an experienced and motivated **Crane Operator** to join our team.

## Build your career with Murray Constructions

### About the role:

- Loading and unloading building and construction materials
- Lift and move objects and materials including into place according to project drawings
- Work on project sites across NSW and northern Victoria as part of crew
- Working alongside site crew as required
- Comply with all relevant SafeWork and WHS Rules and Model Codes of Practice and Documentation
- Carry out routine inspections including daily pre-start checks.

### About you:

- Highly reliable
- Honest and hardworking
- Friendly and effective communication style
- Able to follow company lift plans and doggman directions
- Demonstrated extensive crane operating experience

### Interested applicants should be:

- Physically fit and healthy with the ability and motivation to work in a safe manner
- Willing and able to travel to regional / remote NSW with accommodation and meals paid for
- Capable of following direction; reliable and willing to work independently, and as part of a team

### Interested applicants must:

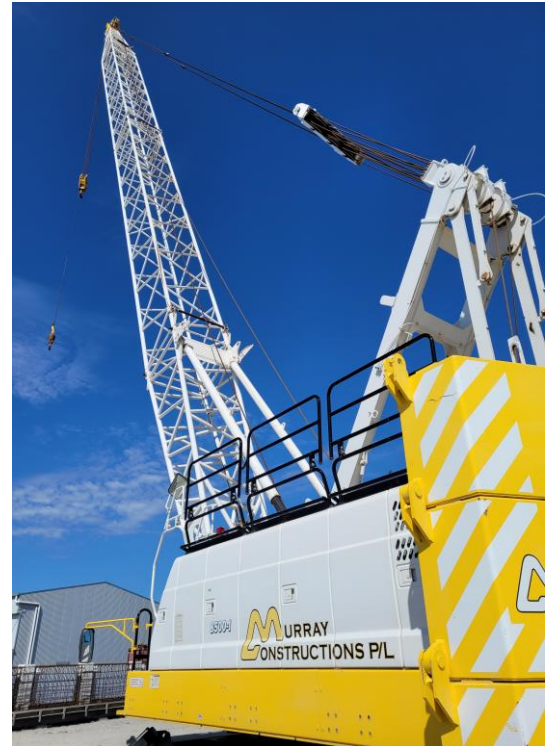
- Hold a minimum C6 Crane Licence, with C1 Crane Licence favourable
- Have a can-do attitude with level-headed thinking
- *Construction Induction Card (CIC / White Card)*

### Highly desirable:

- Various plant licence and experience, including Excavator Operator, Doggman &/ Rigger
- First Aid certificate
- Truck Licence

To obtain an application form, please email [gse@murrayconstructions.com.au](mailto:gse@murrayconstructions.com.au)

All enquiries: (03) 5881 3104



Successful Applicant subject to trial period.

The Application Process for this role will end at the employer's discretion.